

6 Emery Avenue Randolph, NJ



FOR SALE

PROPERTY SPECS:

Property Type:	Flex
Total Building Size:	15,571 SF
Available Space:	10,404 SF
Asking Price:	\$2,250,000
Taxes:	\$20,168 (owner's portion of building tax exempt)
Ceiling Height:	18' clear
Parking:	70 car spaces
Land:	1.75 acres
Utilities:	All units separately metered



Comments: Free standing building located directly off of Route 10.
Turn-key church with kitchen and child care component.

For more information, please contact:

Brian Wilson, SIOR
bwilson@resource-realty.com
973-219-1331

973-299-0900

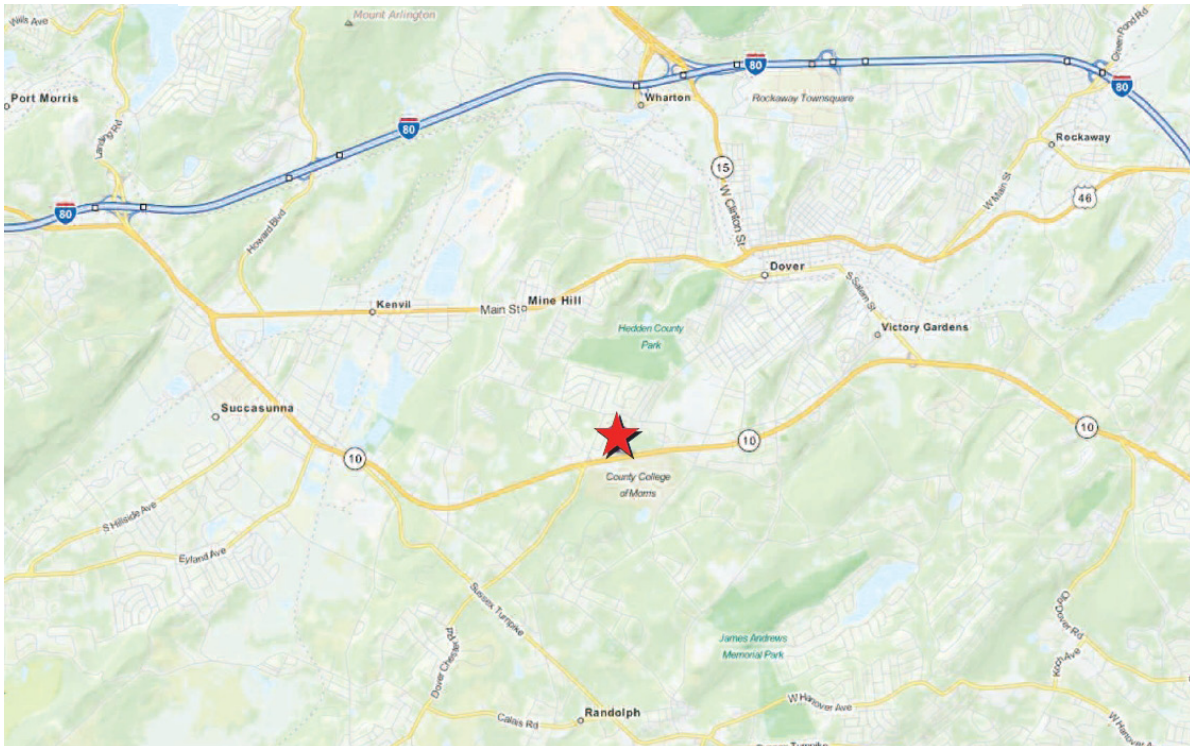
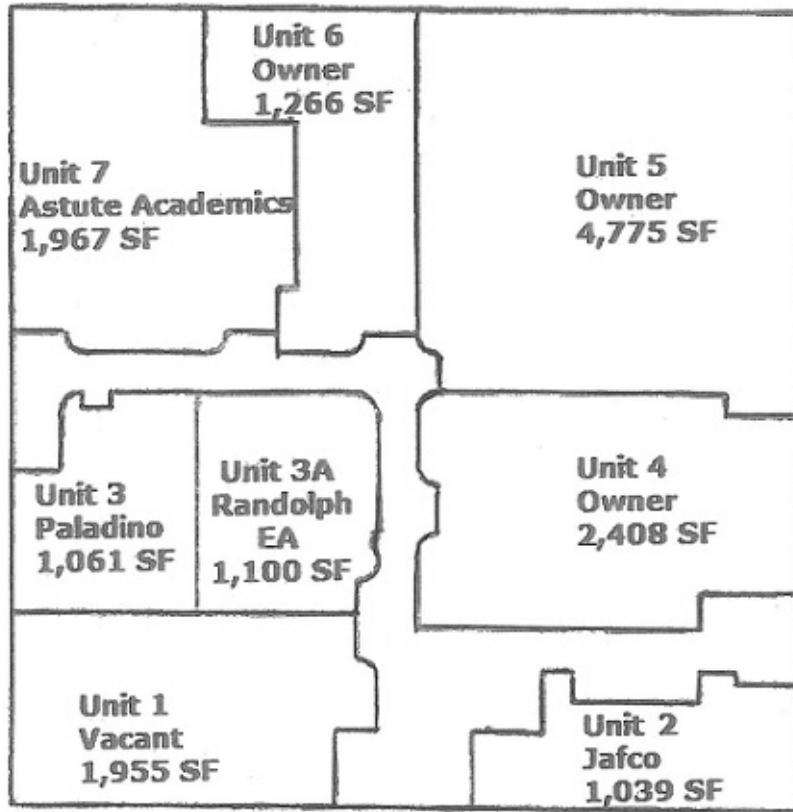
Exclusive Leasing Agent:



Resource Realty
Corporate Real Estate Services

www.resource-realty.com

6 Emery Avenue



All information furnished is from sources deemed reliable. No representation is made as to the accuracy thereof and it is submitted subject to error, omission, change of price, prior sale or lease and withdrawal without notice. Any commission due cooperating brokers is subject to all of the terms and conditions upon which we and our clients have agreed.

Exclusive Leasing Agent:



973-299-0900
www.resource-realty.com