

700 Central Avenue New Providence, NJ



FOR LEASE

PROPERTY SPECS:

- Total Building:** 156,363 SF
- Available Space:** 156,363 SF
- Office Space:** 20,000 SF
- Production Space:** 6,000 SF
- Ceiling Height:** 22' - 25' Clear
- Loading:** 10 Tailboards, 2 Drive-ins
- Parking:** 175+ Cars, Trailer Storage
- Column Spacing:** 55' x 45'
- Power:** 480 volt 3 ph 4,800 amp
- Sprinkler:** Wet System
- Lot Size:** 10.29 Acres
- Property Taxes:** +/- \$1.41 PSF
- Available:** Immediately
- Pricing:** \$14.50 PSF NNN
- Comments:**
 - 2 1/2 miles to I-78
 - Full-service cafeteria with exterior patio area



For more information, please contact:

Tom Consiglio, SIOR
tconsiglio@resource-realty.com
551-427-5003

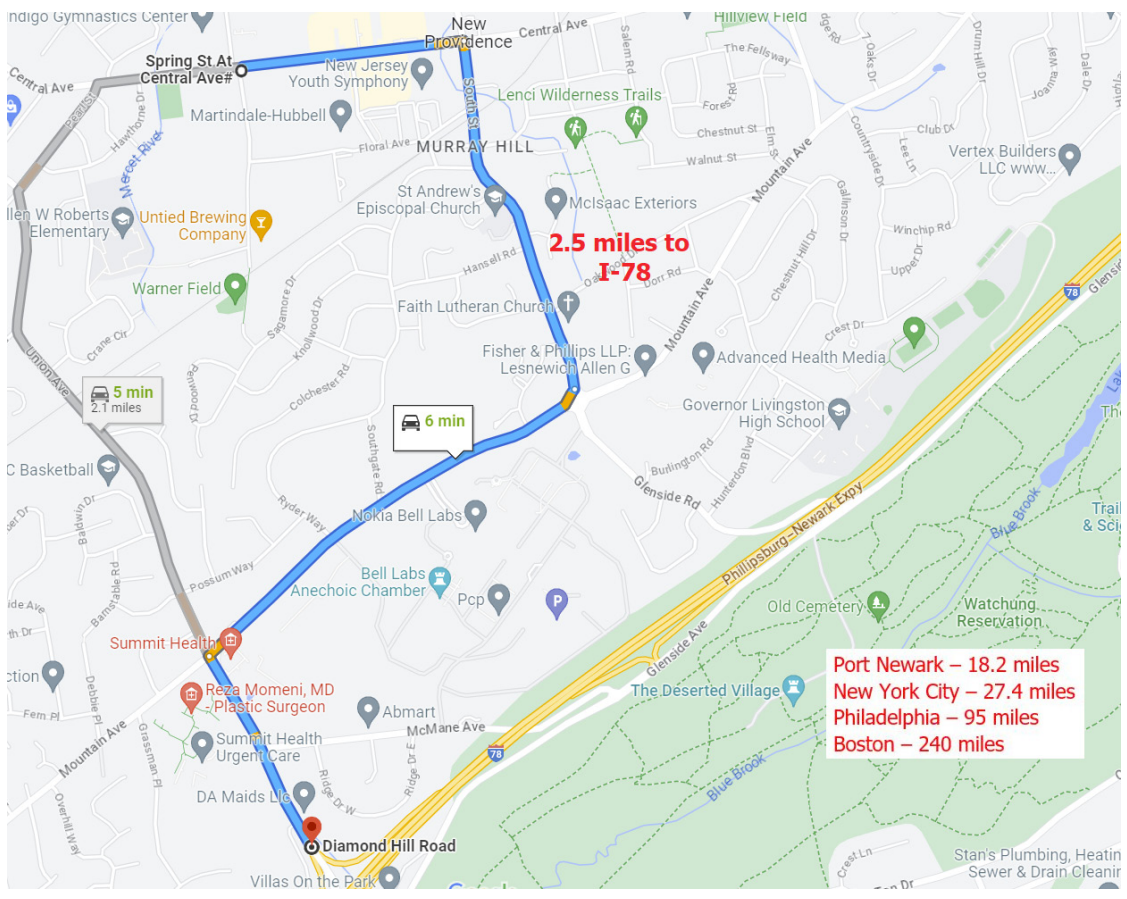
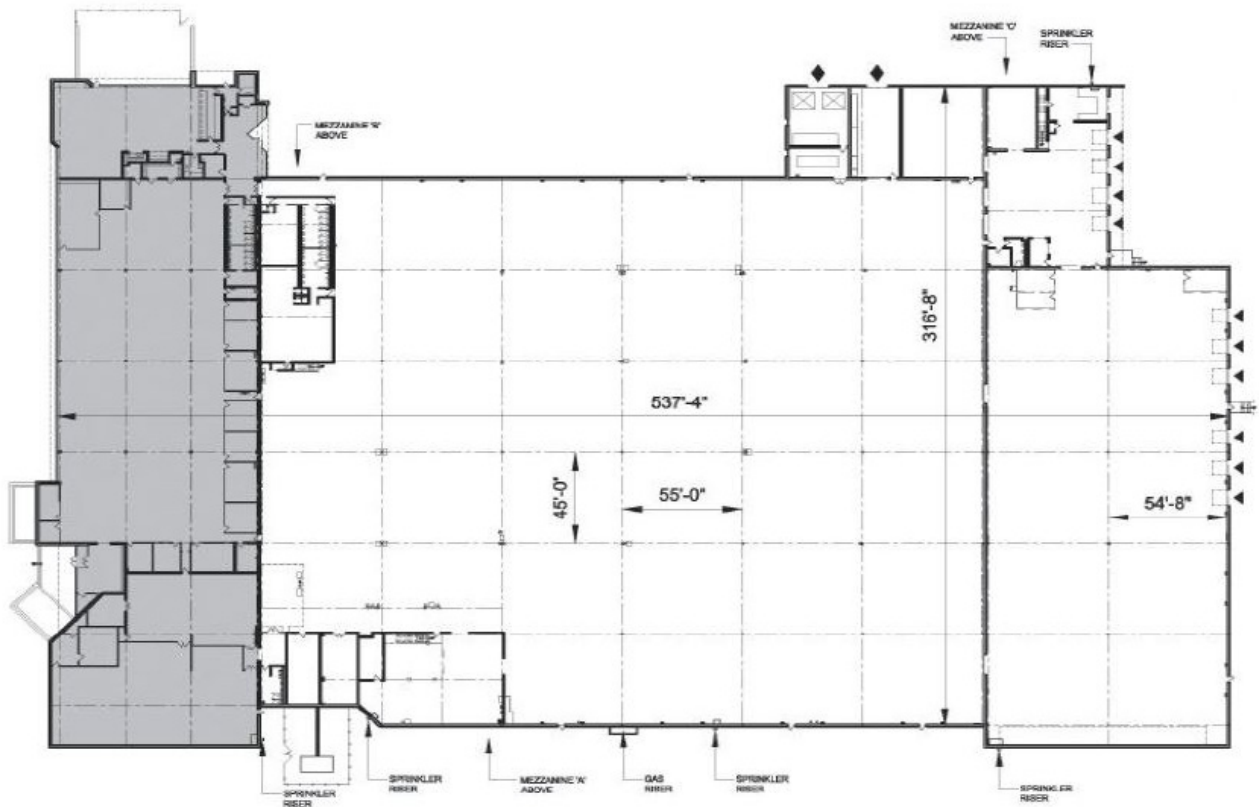
William Pastuszak
bpastuszak@resource-realty.com
201-321-1575

973-299-0900

Exclusive Leasing Agent:



www.resource-realty.com



All information furnished is from sources deemed reliable. No representation is made as to the accuracy thereof and it is submitted subject to error, omission, change of price, prior sale or lease and withdrawal without notice. Any commission due cooperating brokers is subject to all of the terms and conditions upon which we and our clients have agreed.

Exclusive Leasing Agent:



973-299-0900
www.resource-realty.com