

# 700 Central Avenue New Providence, NJ



## FOR LEASE

### PROPERTY SPECS:

- Total Building:** 156,363 SF  
**Available Space:** 156,363 SF  
**Office Space:** 30,778 SF  
**Ceiling Height:** 22' - 25' Clear  
**Loading:** 10 Tailboards, 2 Drive-ins  
**Parking:** 175+ Cars, Trailer Storage  
**Column Spacing:** 55' x 45'  
**Power:** 480 volt 3 ph 4,800 amp  
**Sprinkler:** Wet System  
**Lot Size:** 10.29 Acres  
**Property Taxes:** +/- \$1.41 PSF  
**Available:** Immediately  
**Pricing:** Please call for Lease Rate  
**Comments:**
- 2 ½ miles to I-78
  - Full-service cafeteria with exterior patio area



*For more information, please contact:*

**Tom Consiglio, SIOR**  
[tconsiglio@resource-realty.com](mailto:tconsiglio@resource-realty.com)  
551-427-5003

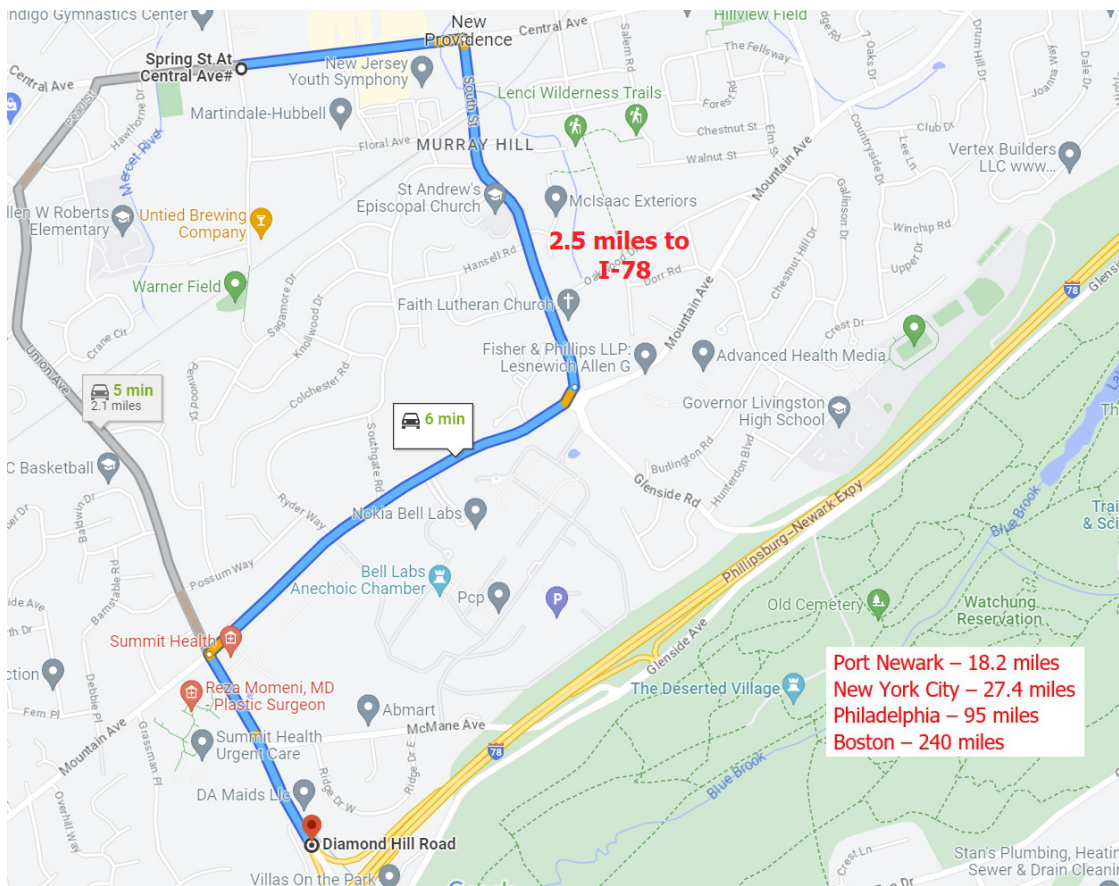
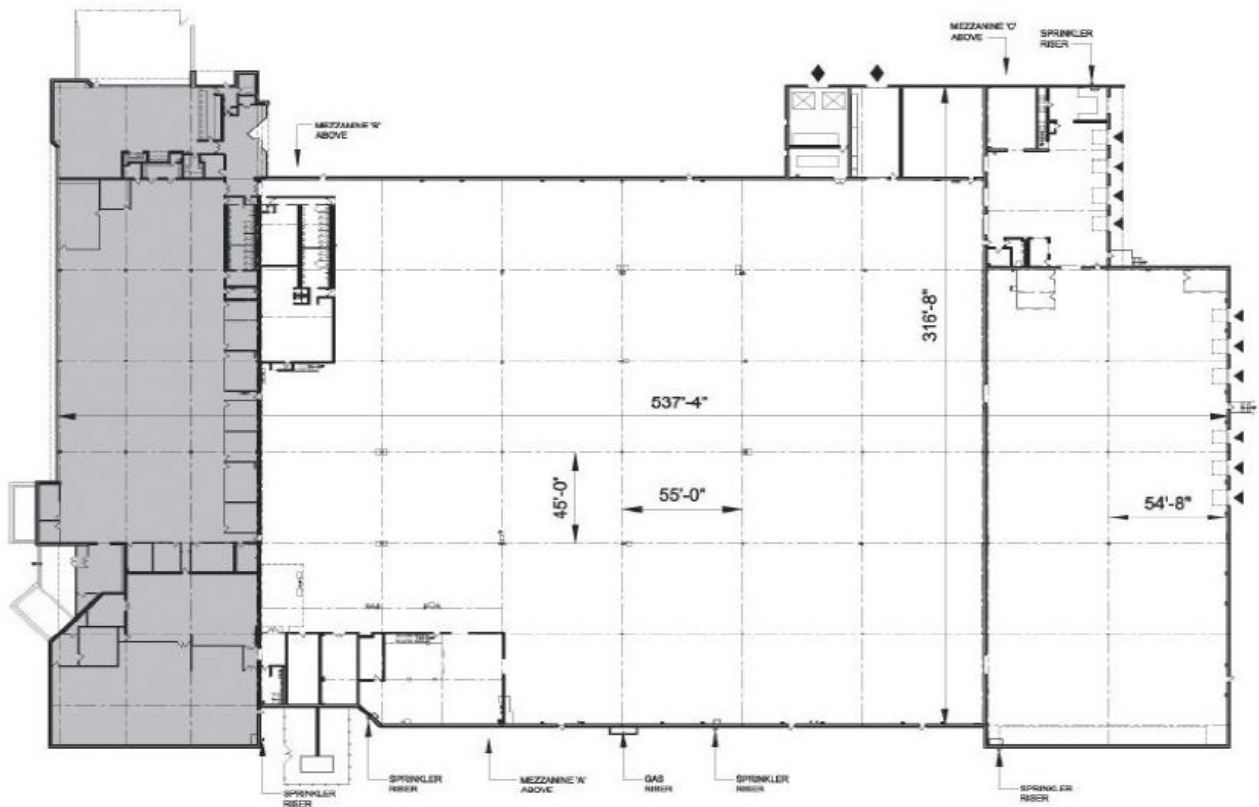
**William Pastuszak**  
[bpastuszak@resource-realty.com](mailto:bpastuszak@resource-realty.com)  
201-321-1575

**973-299-0900**

*Exclusive Leasing Agent:*



[www.resource-realty.com](http://www.resource-realty.com)



All information furnished is from sources deemed reliable. No representation is made as to the accuracy thereof and it is submitted subject to error, omission, change of price, prior sale or lease and withdrawal without notice. Any commission due cooperating brokers is subject to all of the terms and conditions upon which we and our clients have agreed.

Exclusive Leasing Agent:



973-299-0900  
[www.resource-realty.com](http://www.resource-realty.com)